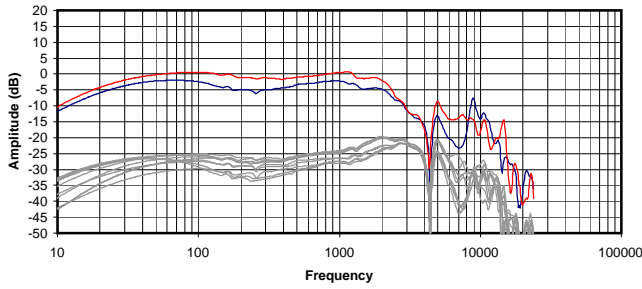
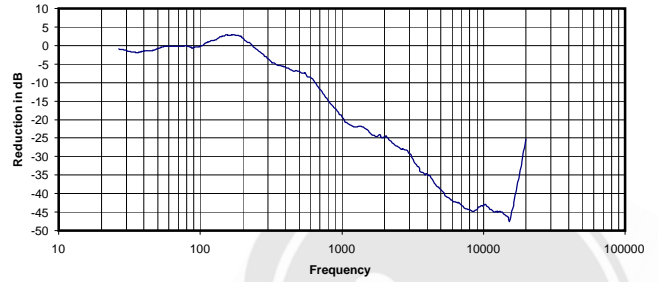


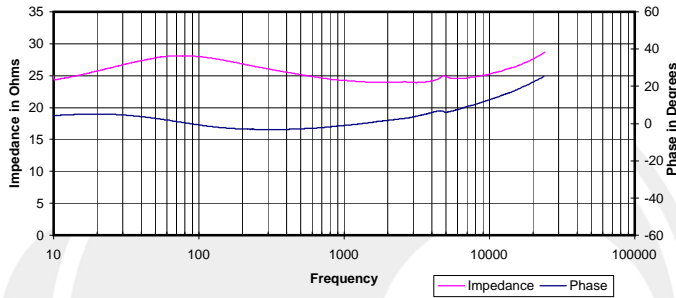
**Frequency Response**  
Top - Compensated and Averaged  
Bottom - Raw Data for Five Headphone Positions



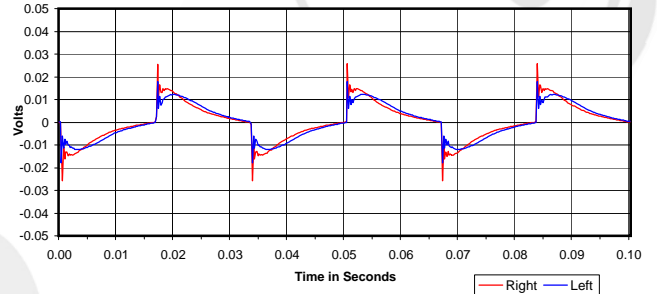
**Isolation**  
Attenuation of External Sound vs. Frequency



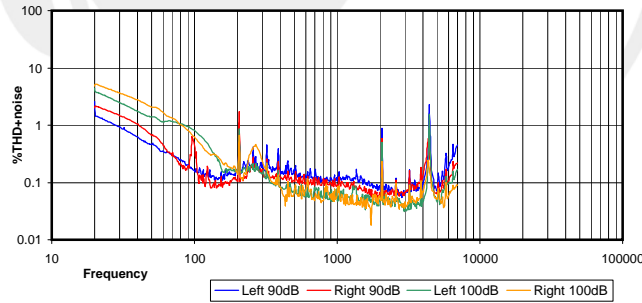
**Electrical Impedance and Phase**  
Measured with 600 Ohm output impedance.



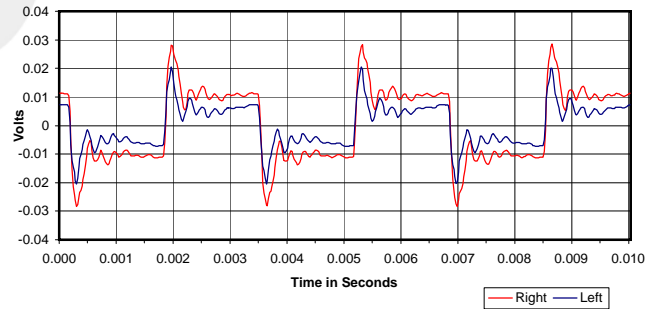
**30 Hz Square Wave**



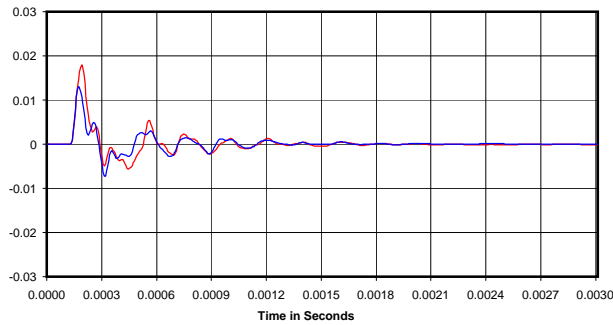
**%THD+noise @ 90dB and 100dB**



**300 Hz Square Wave**



**Impulse Response**



Volts RMS required to reach 90dB SPL:  
Impedance @ 1kHz:  
Power Needed for 90d BSPL  
Broadband Isolation in dB (100Hz to 10kHz):

0.030 Vrms  
24 Ohms  
0.04 mW  
-18 dB

